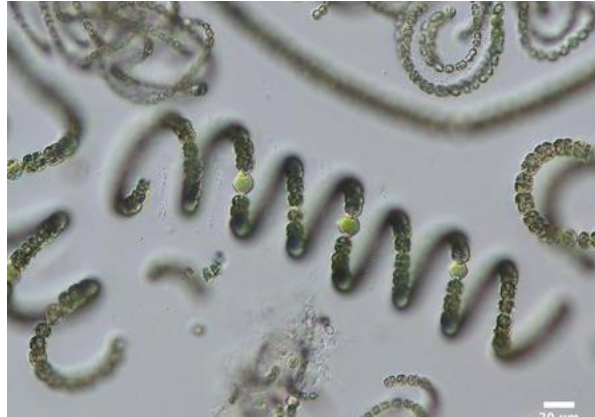


## Table. 4. Common Phytoplankton and Zooplankton in Lake Almanor

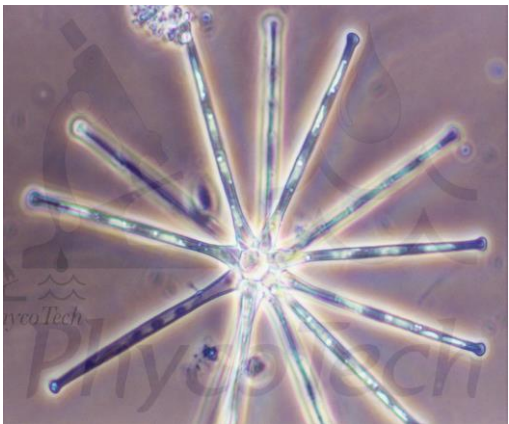
### Some Common Phytoplankton of Lake Almanor (magnified 100-400 times)



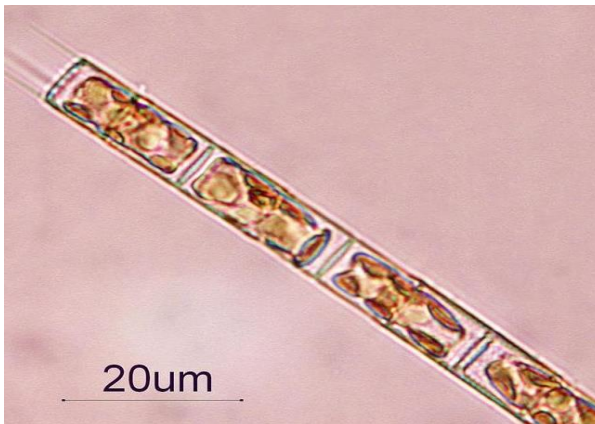
Lyngbya sp. (Cyanobacteria)



Dolichospermum sp. (Cyanobacteria)



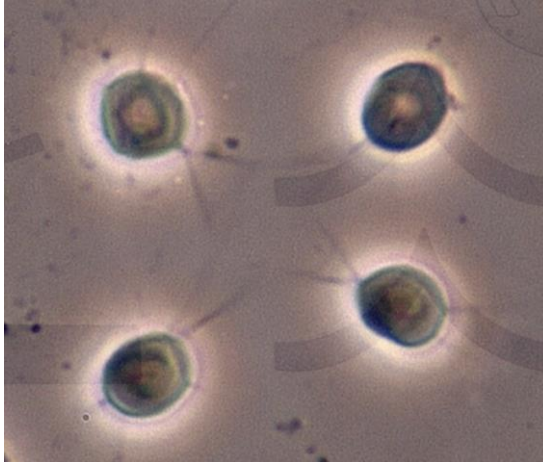
Asterionella sp. (Bacillariophyta-Diatoms)



Aulacoseira sp. (Bacillariophyta – Diatoms)

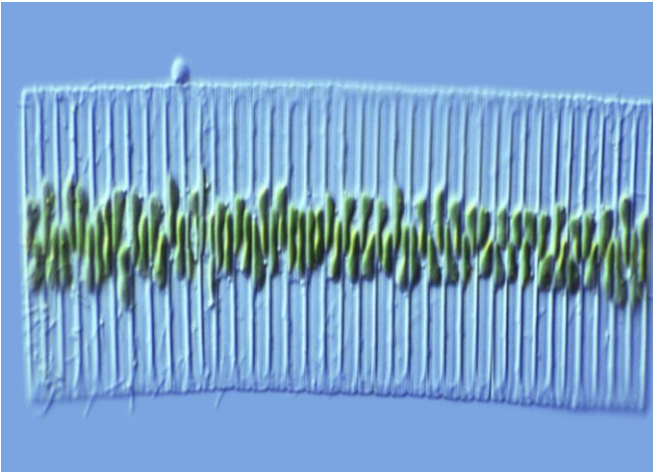


Volvox sp. (Chlorophyta – Green algae)



Dictyosphaerium sp. (Chlorophyta – Green alga)

**Some Common Phytoplankton of Lake Almanor, continued (magnified 100-400 times)**



Fragilaria sp. (Bacillariophyta -Diatoms)

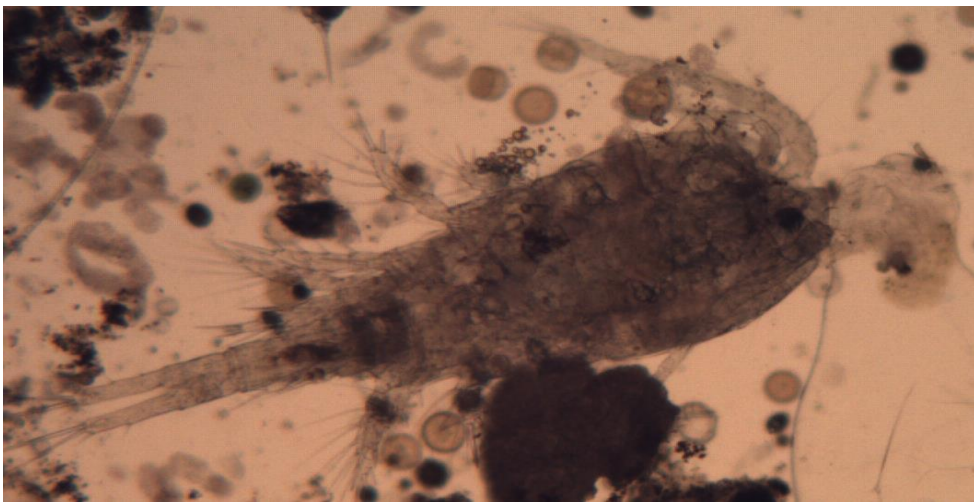


Dinobryon sp. (Chrysophyta – yellowbrown algae)

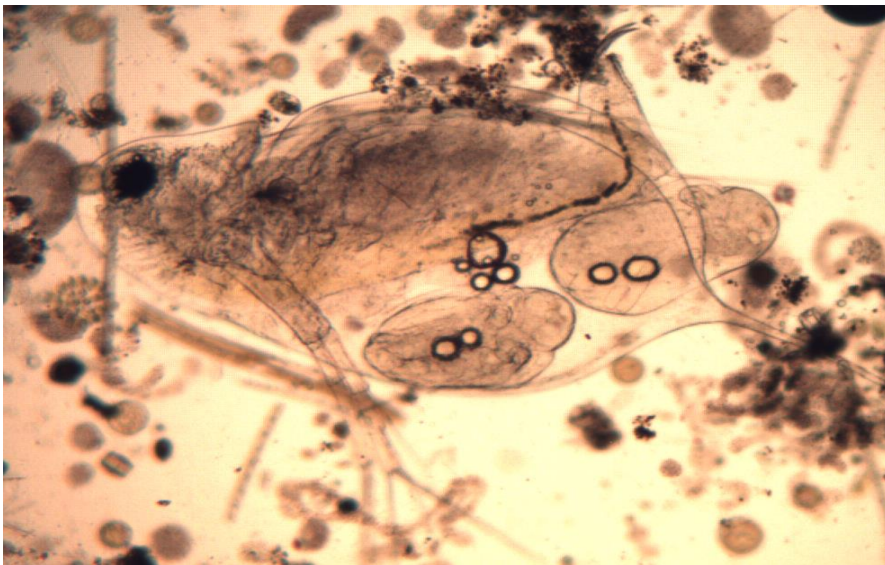
**Some Common Zooplankton of Lake Almanor (magnified 100-400 times)**



Rotifera (Keratella sp., Polyarthra sp.)



Copepoda (Cyclops sp.)



Cladocera (Daphnia sp.)