

[Link to Recording](#)

Webinar Synopsis

In response to the [field tour and meeting](#) held on May 24, 2016, USFS representatives presented a modified Categorical Exclusion (CE) polygon network for the group's review (see Appendix A). Considerations including the Wildland-Urban Interface (WUI), highway corridors, and survey requirements were reflected in the modified boundaries. The group approved the network as designated areas for surveys and analysis.

Attendees

Don Curtis
Crystal Danheiser
Ryan Hadley
Karen Harville
Kristy Hoffman

Pete Johnson
Jonathan Kusel
Trish Ladd
Lori Martin
Jeff Oldsen

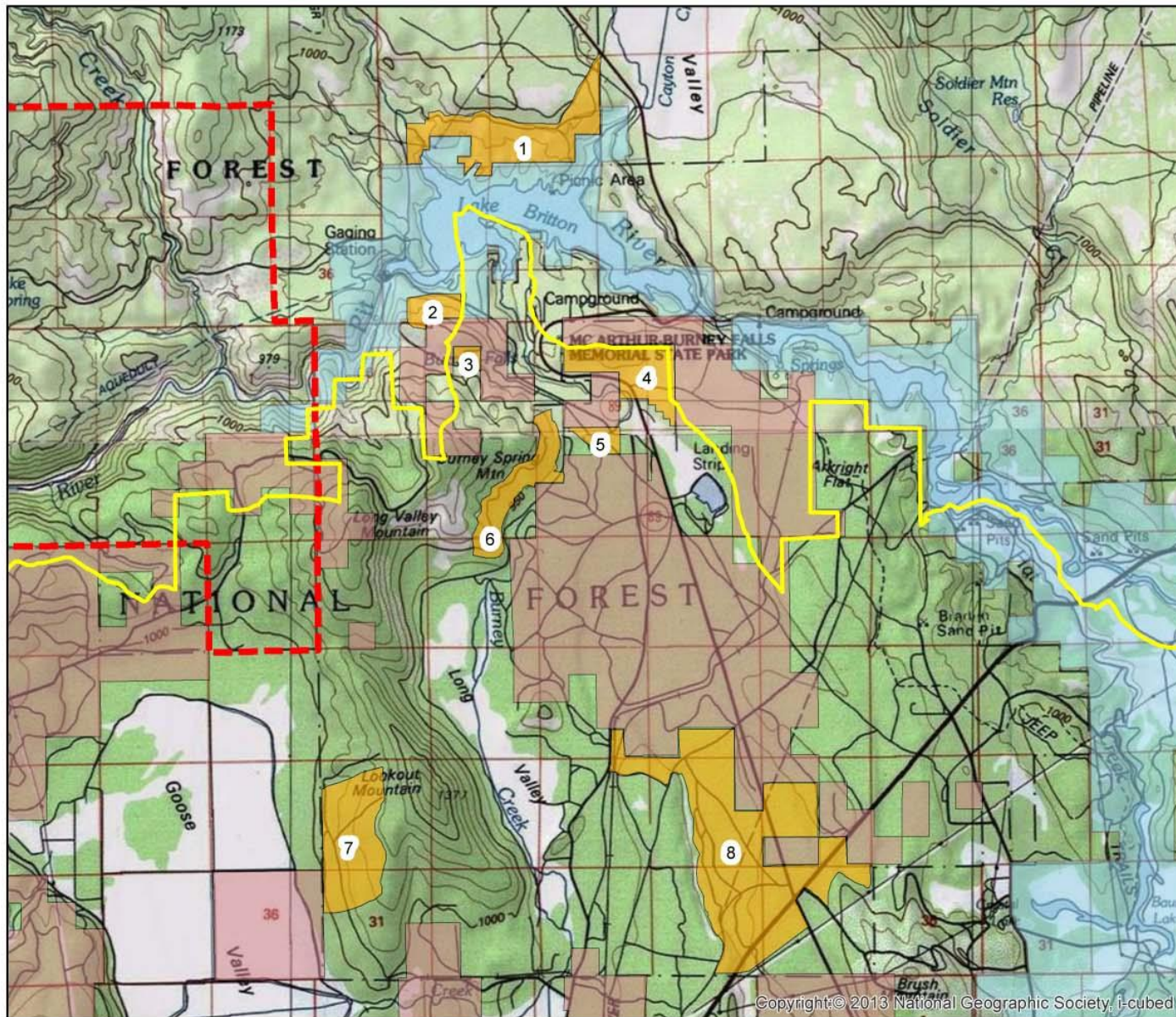
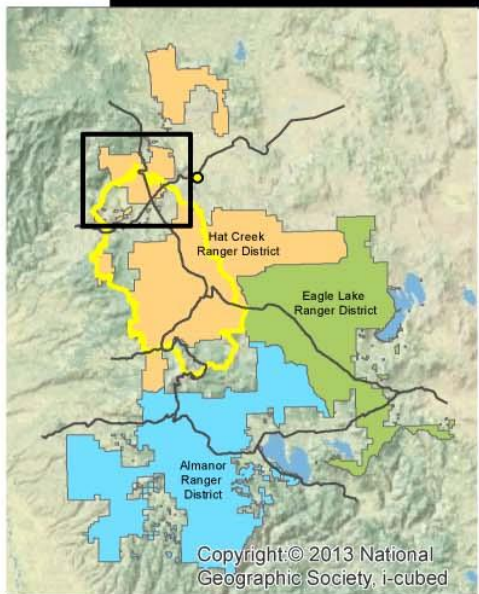
John Owen
Allison Reeves Jolley
Aaron Rieffanaugh

Webinar Notes

- USFS modified the boundaries, prioritizing areas adjacent to highways and the WUI as discussed by the Collaborative in previous meetings. Survey requirements and timing issues were also taken into consideration.
- One significant change included removing acres from the area adjacent to Burney Creek (section 6), and adding more acres to a new section (section 8) that is near the HWY 89/299 intersection.
- The revised Section 8 is now integrated with adjacent Fruit Growers Supply (FGS) land.
- Section 6 originally included areas with "survey and manage" species. The acres were removed and boundaries redrawn to limit the survey requirements for the area.
- The current CE boundaries now encompass approximately 2,700 acres.
- Section 7 was not visited by the group during the May 24th field tour. USFS notes the area is between Goose and Long Valley, with residences to the southeast. The area was originally identified through aerial surveys of tree mortality; it primarily consists of brush, oak, and large standing dead trees.
- T. Ladd inquired about the potential prescriptions for Section 4, noting the value of the understory in its current state. C. Danheiser mentioned the possibility of using restoration techniques in the area. Type conversion from pine to oak and the lack of merchantable material further support the use of restoration techniques.
- J. Kusel recommended holding a discussion of type conversion for the group at a later date.
- USFS restated the value of section 7 and it was approved by the group.
- USFS emphasized the importance of communication going forward, particularly for the status of assessments.
- C. Danheiser informed the group that the boundaries reflect areas for analysis, not prescription work. There will need to be an assessment of cumulative effects prior to treatments.

Britton Burney HFRA CE

Hat Creek Ranger District | Lassen National Forest



- CFLR Boundary
- Britton Burney HFRA Units
- Late Successional Reserve
- Fruitgrowers
- PGE

| Unit | Acres |
|------|-------|
| 1 | 439 |
| 2 | 76 |
| 3 | 31 |
| 4 | 262 |
| 5 | 52 |
| 6 | 226 |
| 7 | 406 |
| 8 | 1259 |



N
ABrooks
NAD83 UTM Z10N

Date Saved: 6/7/2016 3:31:42 PM

Document Path: C:\Users\lamriffanaugh\Documents\ArcGIS\Projects\BrittonBurneyHFRA_CE_20160607_E679701B-9323-4176-BCC5-B9CA3D6AE91E\103\BrittonBurneyHFRA_CE.mxd



Copyright © 2013 National Geographic Society, i-cubed